



VERTUE

ELEVATED LIVING

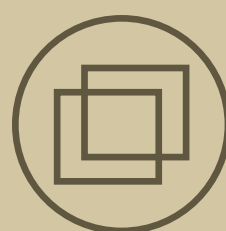
RAIN



SOFT ON
SKIN



LIGHT &
VELVET



GOOD
MARTINDALE



BREATHABLE



SMOOTH

ABOUT COLLECTION

The RAIN collection is a sublime blend of sophistication and serenity. Crafted for those who crave understated elegance, "Rain" boasts a luxurious texture that caresses your senses. Its plush, velvety surface invites you to sink into ultimate comfort, while the soothing color palette whispers tranquility into your living space. With a spectrum of muted hues reminiscent of gentle raindrops, this collection transforms your home into a serene sanctuary. Whether you choose the calming blues, soft grays, or gentle greens, each color in the "Rain" collection is carefully curated to evoke a sense of tranquility. Elevate your home with the timeless allure of "Rain" and experience luxury in its purest form.



VERTUE
ELEVATED LIVING



RAIN



VERTUE
ELEVATED LIVING

RAIN



S.NO. : 01

SHADE : 01

CODE : V - 9009



S.NO. : 02

SHADE : 02

CODE : V - 9009



S.NO. : 03

SHADE : 03

CODE : V - 9009



RAIN



VERTUE
ELEVATED LIVING

RAIN



S.NO. : 08

SHADE : 04

CODE : V - 9009



S.NO. : 09

SHADE : 05

CODE : V - 9009



VERTUE
ELEVATED LIVING

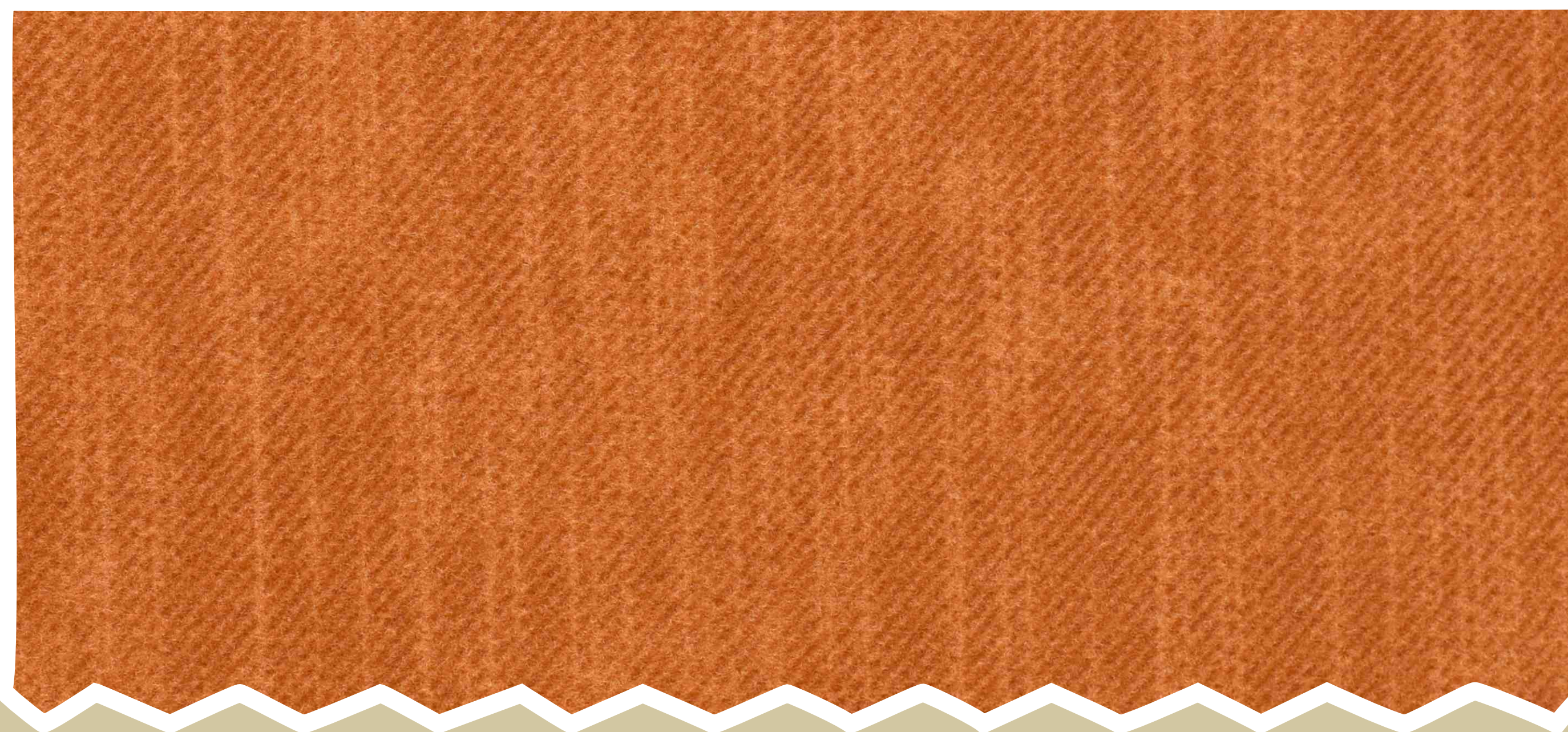
RAIN



S.NO. : 14

SHADE : 06

CODE : V - 9009



S.NO. : 15

SHADE : 07

CODE : V - 9009



VERTUE
ELEVATED LIVING

RAIN



S.NO. : 19

SHADE : 08

CODE : V - 9009



S.NO. : 20

SHADE : 09

CODE : V - 9009



S.NO. : 21

SHADE : 10

CODE : V - 9009



RAIN





V E R T U E
ELEVATED LIVING

R A I N



S.NO. : 26

SHADE : 11

CODE : V - 9009



S.NO. : 27

SHADE : 12

CODE : V - 9009



S.NO. : 28

SHADE : 13

CODE : V - 9009



S.NO. : 29

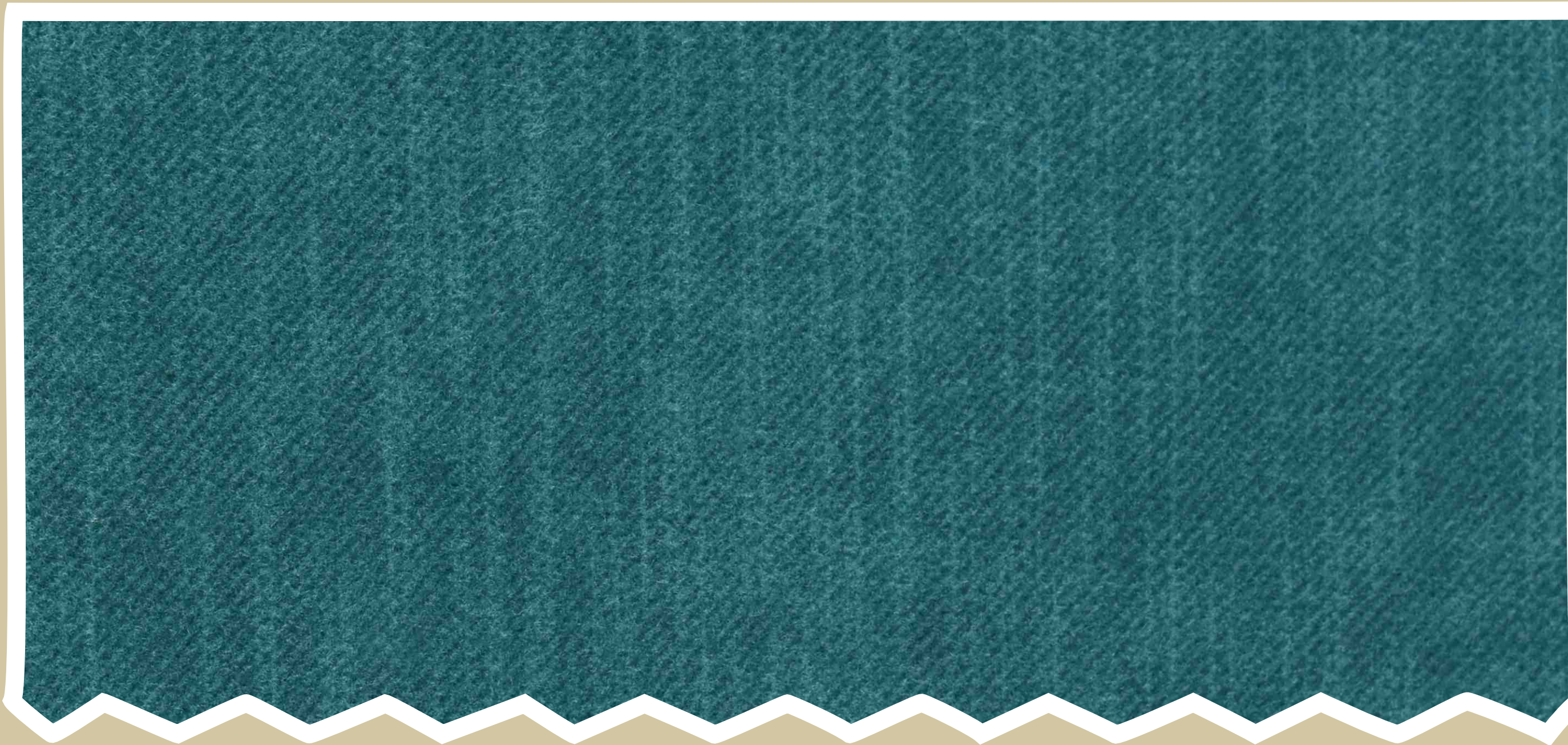
SHADE : 14

CODE : V - 9009



VERTUE
ELEVATED LIVING

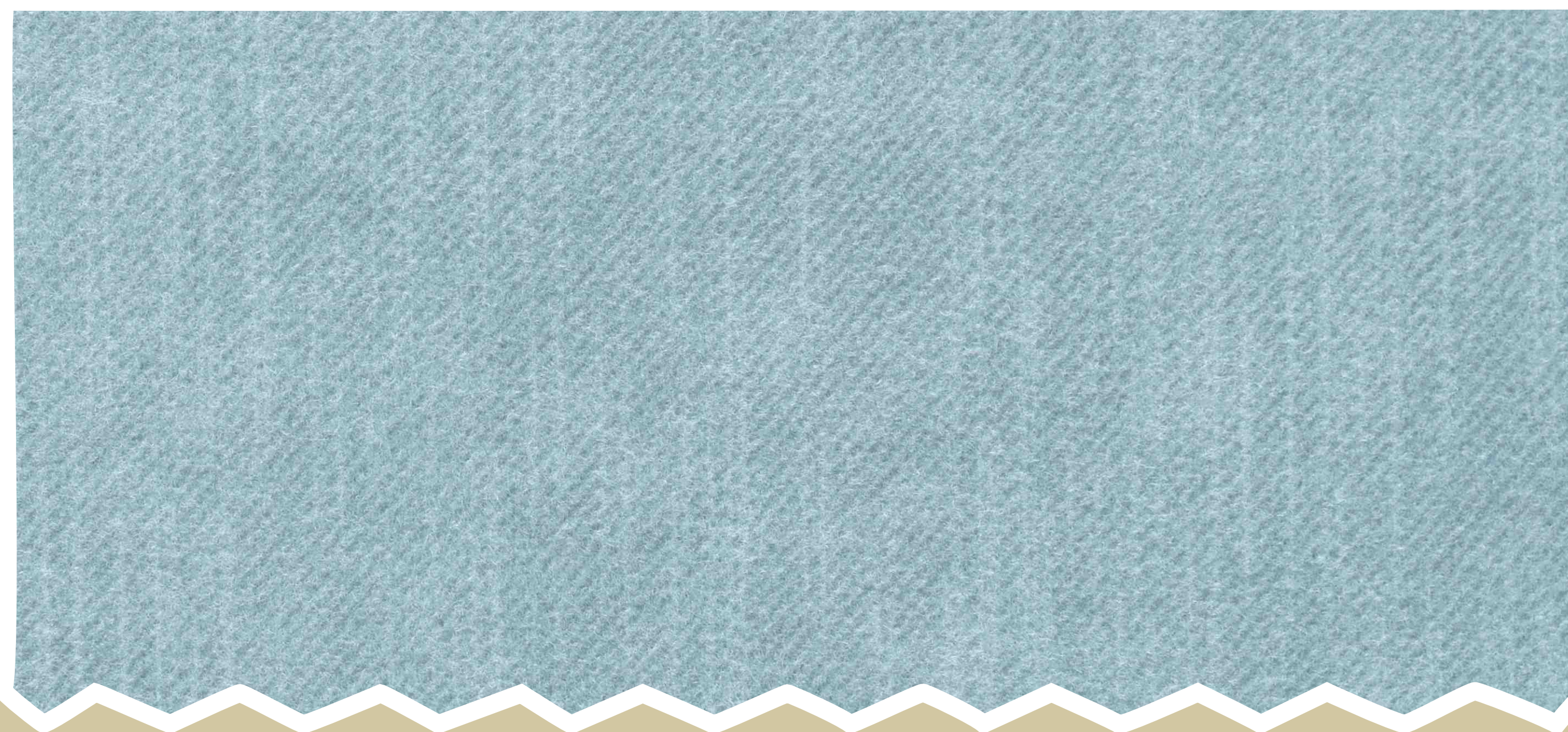
RAIN



S.NO. : 30

SHADE : 15

CODE : V - 9009



S.NO. : 37

SHADE : 16

CODE : V - 9009



VERTUE
ELEVATED LIVING

RAIN



S.NO. : 38

SHADE : 17

CODE : V - 9009



S.NO. : 39

SHADE : 18

CODE : V - 9009



S.NO. : 40

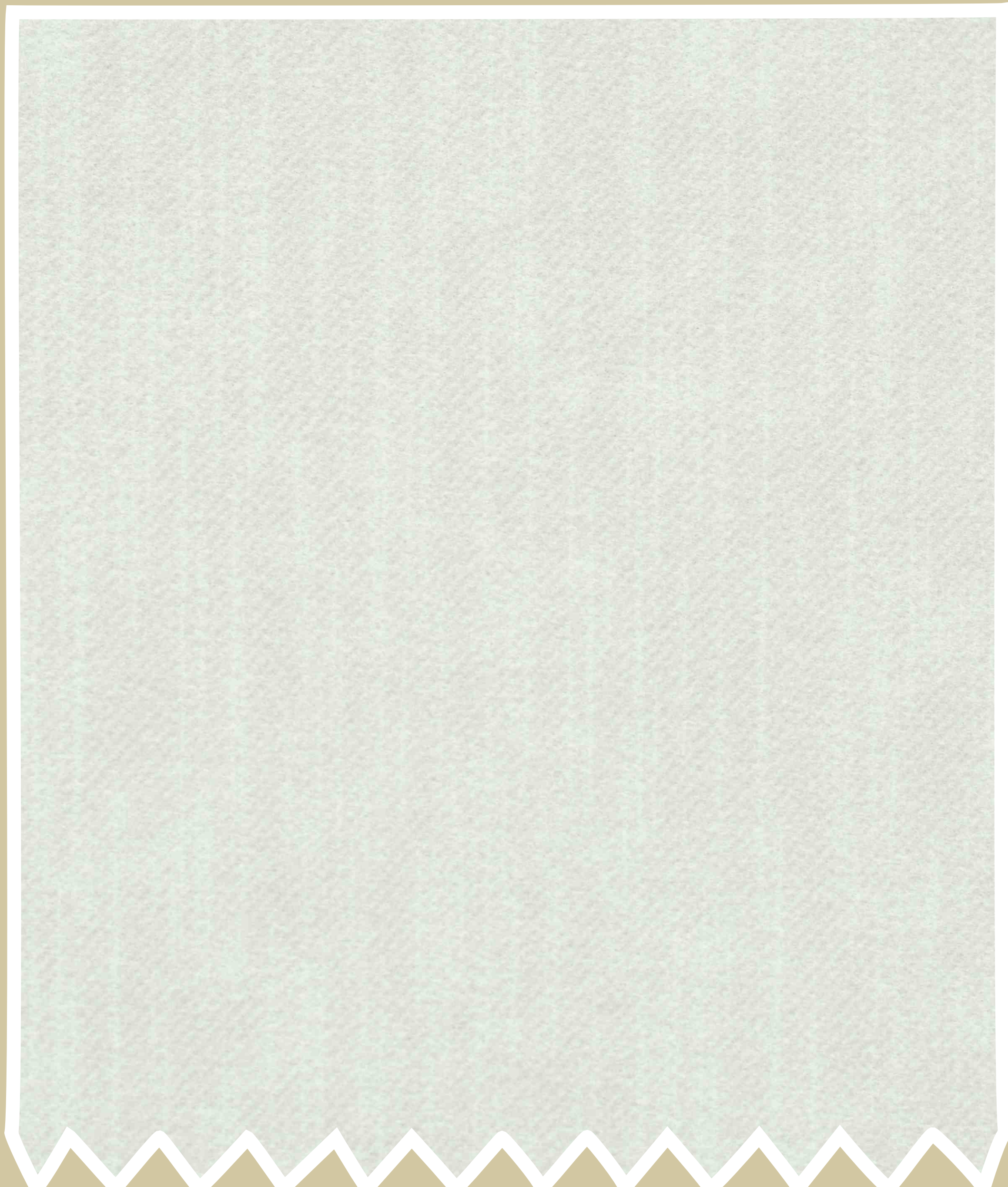
SHADE : 19

CODE : V - 9009



VERTUE
ELEVATED LIVING

RAIN



S.NO. : 01

SHADE : 01

CODE : V - 9009



S.NO. : 02

SHADE : 02

CODE : V - 9009



S.NO. : 03

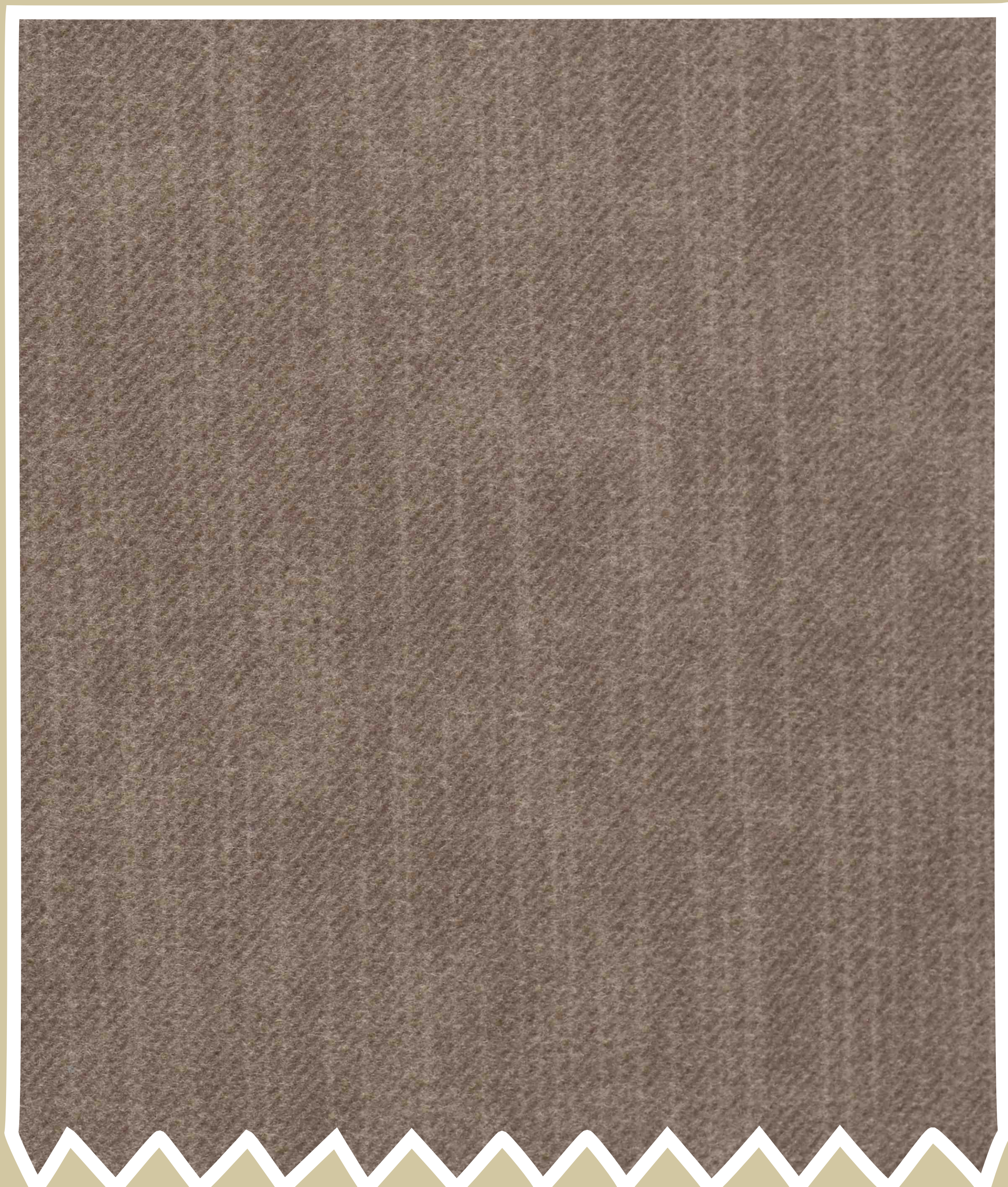
SHADE : 03

CODE : V - 9009



VERTUE
ELEVATED LIVING

RAIN



S.NO. : 08

SHADE : 04

CODE : V - 9009



S.NO. : 09

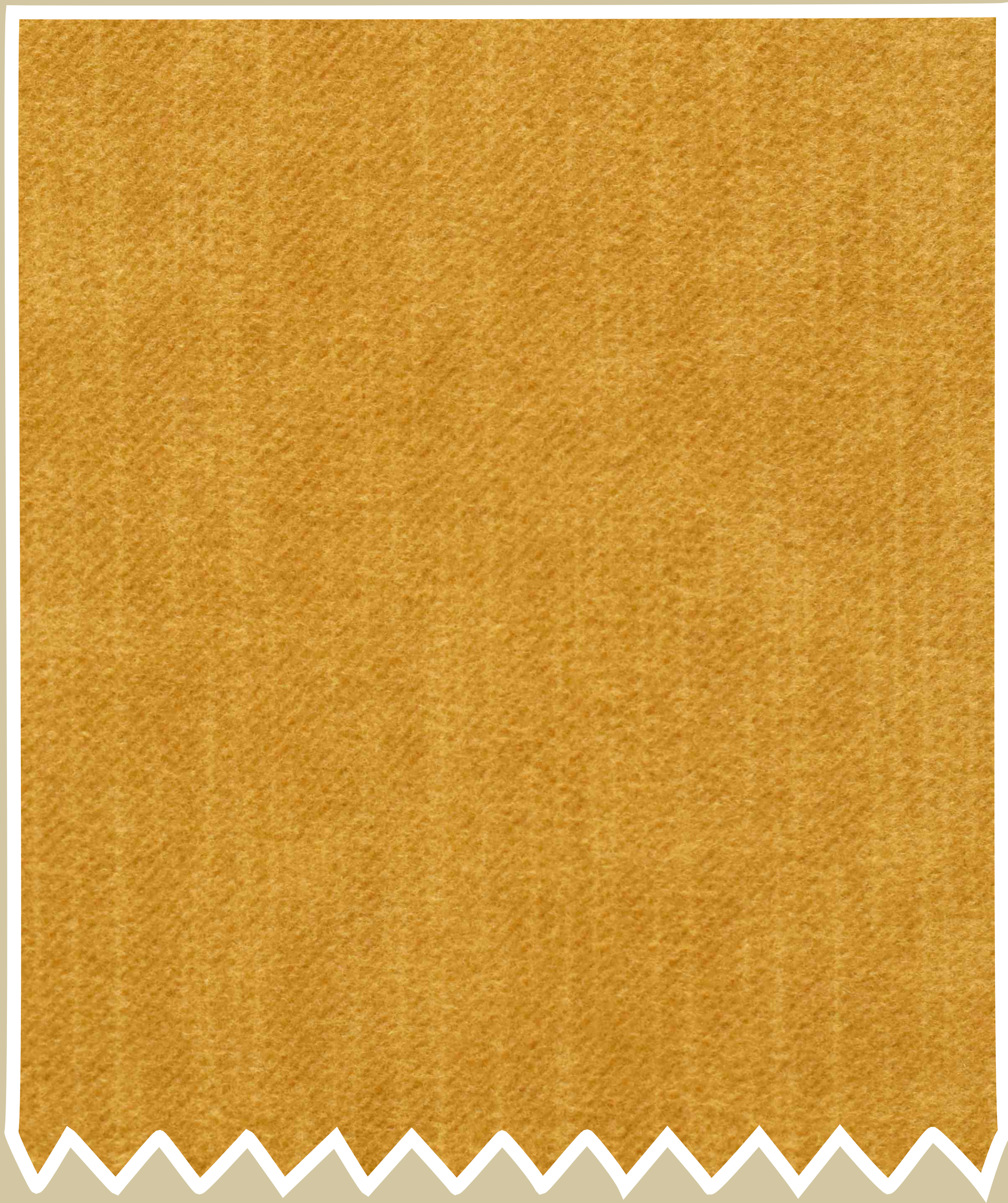
SHADE : 05

CODE : V - 9009



VERTUE
ELEVATED LIVING

RAIN



S.NO. : 14

SHADE : 06

CODE : V - 9009



S.NO. : 15

SHADE : 07

CODE : V - 9009

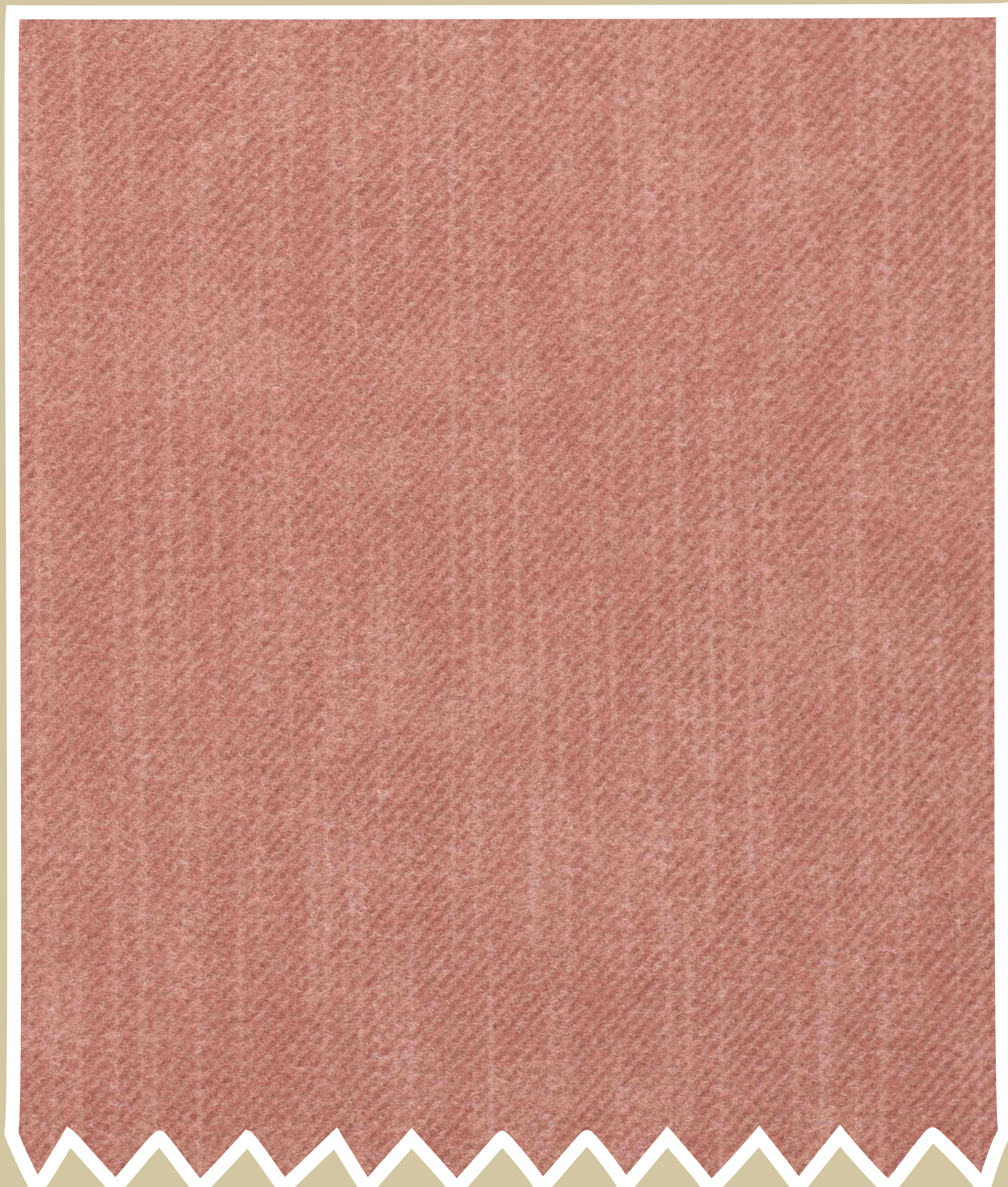


RAIN



VERTUE
ELEVATED LIVING

RAIN



S.NO. : 19

SHADE : 08

CODE : V - 9009



S.NO. : 20

SHADE : 09

CODE : V - 9009



S.NO. : 21

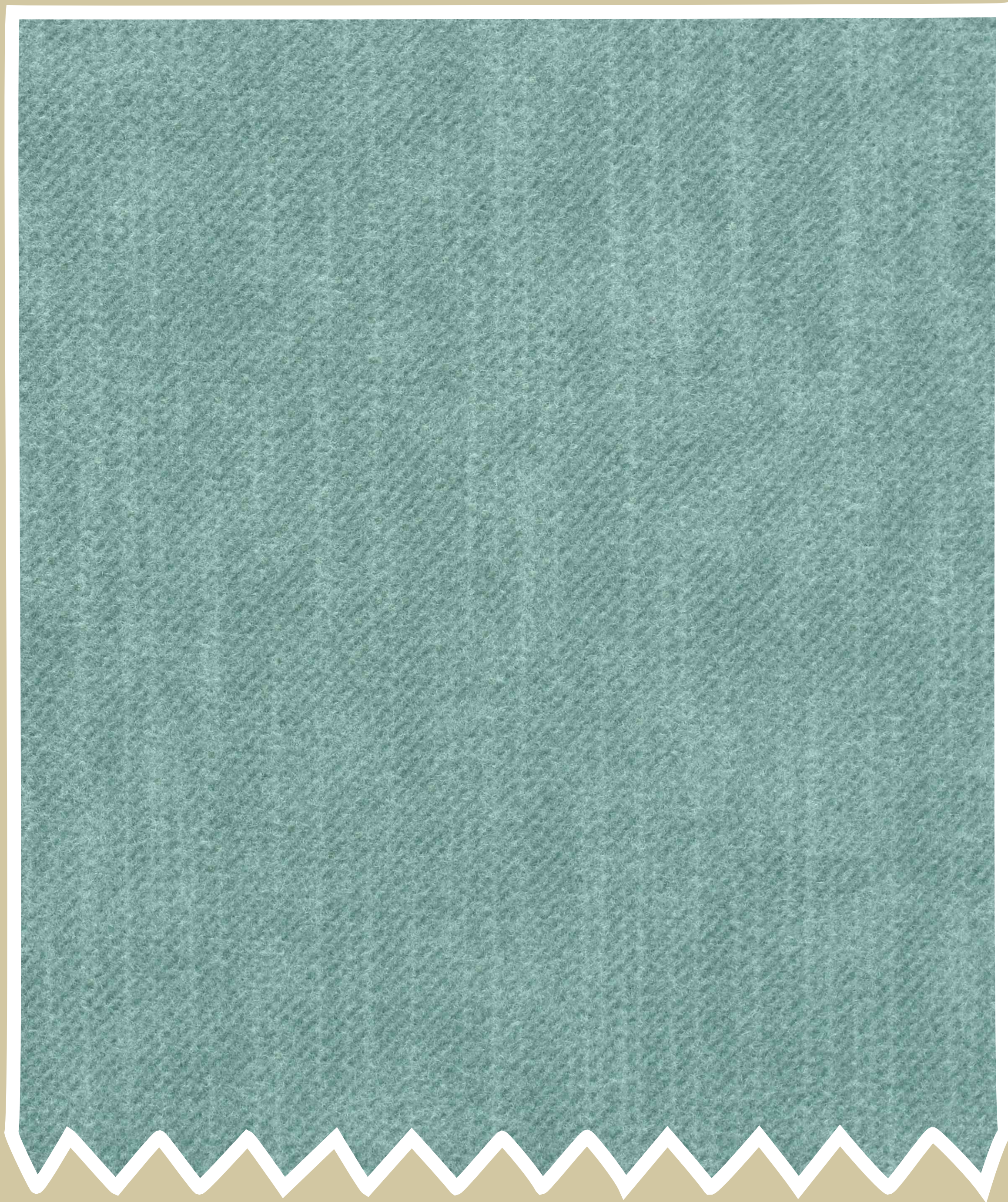
SHADE : 10

CODE : V - 9009



VERTUE
ELEVATED LIVING

RAIN



S.NO. : 26

SHADE : 11

CODE : V - 9009



S.NO. : 27

SHADE : 12

CODE : V - 9009



S.NO. : 28

SHADE : 13

CODE : V - 9009



S.NO. : 29

SHADE : 14

CODE : V - 9009



VERTUE
ELEVATED LIVING

RAIN



S.NO. : 30

SHADE : 15

CODE : V - 9009



S.NO. : 37

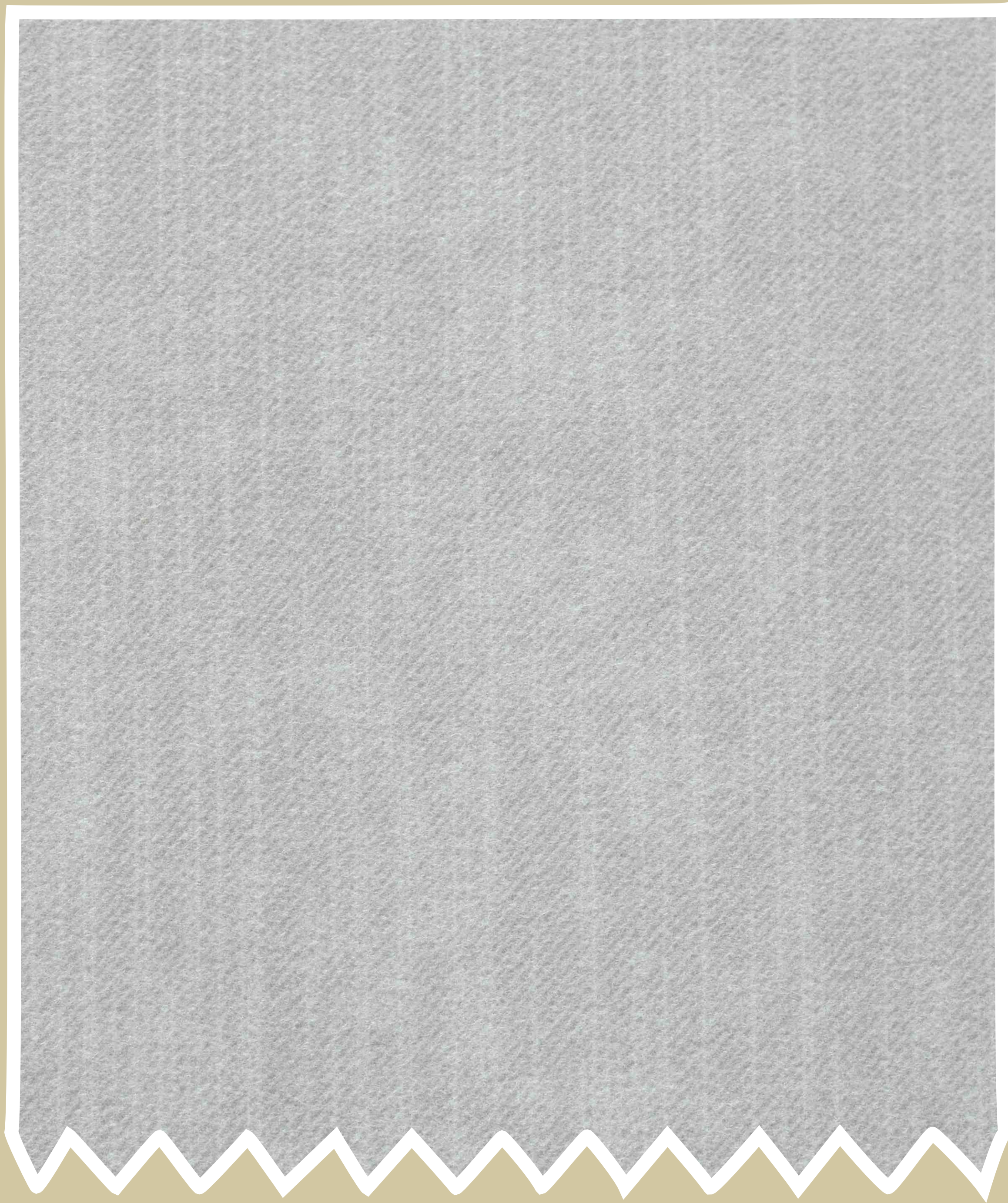
SHADE : 16

CODE : V - 9009



VERTUE
ELEVATED LIVING

RAIN



S.NO. : 38

SHADE : 17

CODE : V - 9009



S.NO. : 39

SHADE : 18

CODE : V - 9009



S.NO. : 40

SHADE : 19

CODE : V - 9009



VERTUE

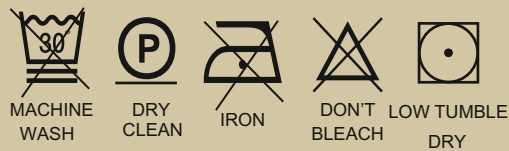
ELEVATED LIVING

BOOK CRAFTED BY



COLLECTION :- RAIN			DESIGN :- V-9009			
S.No.	TEST DETAILS	UNIT	DIRECTION	TEST METHOD	OBSERVATION	
					V-9009	BERKIN
1	Total Thickness	MM	-	IS:7016:Part I	1.53-1.58	0.70-0.74
2	Total Weight	GLM	-	IS:7016:Part I	540	420
3	Breaking Strength	KG/5CM.	Warp	IS :7016:Part II	70	35
			Weft		58	39
4	Elongation	%	Warp	IS :7016:Part II	81	60
			Weft		91	83
5	Tear Strength	KGF	Warp	IS :7016:Part III	5.8	4.1
			Weft		5.9	4.5
6	Tensile Strenght	N/MM	Warp	IS :7016:Part II	15.2	7.0
			Weft		10.9	7.9
7	Adhesion Strength	KG/5CM.	Warp	IS :7016:Part V	2.0	-
			Weft		1.8	-
8	Martindale Abrasion	CYCLES	Dry	ISO 5470	55000	250000
			Wet		38000	250000

wash care



RAIN

VERTUE.IN

